

## Collect and record rainfall data **ANYWHERE** with the JRG Log™

The JRG Log™ and JRG Log SP™ provide an economical solution to the annual collection and recording of rainfall data even in remote areas.





# Professional Products

## The JRG Log & JRG LOG-SP

The RainLogger is comprised of our tipping bucket rain gauge and the JRG Log™ rain logger mounted and ready for installation in the ground. It will collect and record rainfall anywhere in the world for one year at a resolution of one minute. Both systems feature:

- One year capacity – both logger and battery supply
- One minute time/date stamp resolution
- EEPROM Non-volatile memory
- Powered by one CR2477N battery
- Windows®-compatible software

## The JRG Log™ System features the RAINEW Tipping Bucket

The 8" diameter UV-inhibited polypropylene collector meets NWS specifications for statistical accuracy. Every time the bucket tips, a count is transmitted. Each tip of the bucket is equivalent to  $\frac{1}{100}$  th of an inch of rainfall.

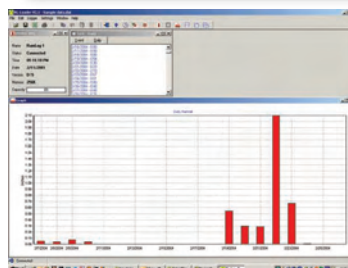
## The JRG Log SP™ features the more rugged RGA Industrial Tipping Bucket — for enhanced accuracy

Constructed from anodized aluminum and stainless steel, the RGA tipping bucket rain gauge provides years of precision recording of rainfall data. The tipping bucket sensor is mounted on stainless steel instrument bearings and housed in an anodized aluminum case. The unit has a built in bubble level to facilitate installation. An insect/debris screen is also provided.

## Both Systems include:

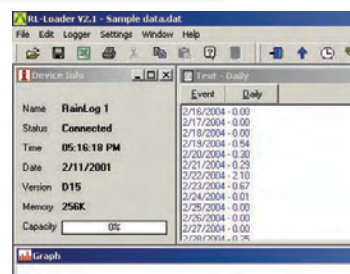
### RainLog Data Logger

The RainWise RainLog data logger provides an economical method of logging rainfall at a remote location where power is not available. This battery operated logger fits inside our rain gauge and will log total rainfall at a one minute resolution for up to one year. It can easily be unplugged and connected to the serial port of a computer. It comes complete with software and serial port connecting cable. Serial to USB converter available.



## RL-Loader 2 Software

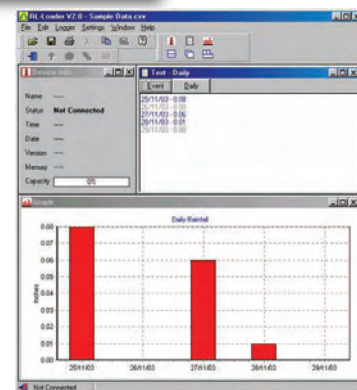
This free Windows based software package will run on Windows 98 or newer. RL-Loader is used to configure and download data from the RainLog. Data is displayed in both text and graphical formats. You can print graphs and reports directly. Previously saved data can be loaded to perform analysis and generate reports. The latest release can export data directly into Microsoft Excel. The device info window gives you vital information about the attached Rainlog, like its time/date and the amount of memory used. The text window displays daily totals or the list of rainfall events as they occurred. The graph window displays a bar chart of the daily rainfall totals. The graphing range is also configurable.



**NEW RL-Loader Version 2.2** now supports Windows Vista and can import data files from RLmobile.

## RLmobile Windows Mobile Software

Now you can use your PDA to download data in the field. Its quick and easy to install and use. This is optional software.



## The JRG Log™

The rain logger provides an economical method of logging rainfall at a remote location where power is not available.

This logger fits inside any of our rain gauges and will log total rainfall at a one minute resolution anywhere in the world for one year. It can easily be unplugged and connected to the serial port of a computer. It comes complete with Windows® software and serial port connecting cable.

- Five year warranty.
- One year capacity – both logger and battery supply.
- One minute time/date stamp resolution.
- Will fit inside any RainWise gauge.
- Nonvolatile memory.
- Powered by two AAA alkaline batteries.
- May also be used as an event recorder.
- LED flashes when properly connected.
- Windows® software included.

