

6 Channel Handheld
Temperature Data Logger
with Touch Screen

- 4 x Type J, K, T, E, R, S or N thermocouple inputs and 2 x 3-wire Pt100 inputs
- Display and log all 6 channels simultaneously or individually
- Scheduled and manual logging start/stop
- SD Card stores up to 1 year of data
- Display max, min, average and standard deviation
- Display temperature difference between any two channels
- Battery or mains powered (with included adapter)
- Touch screen with backlight
- 2-channel temperature chart
- Alarm indication for each channel
- CE Marked and RoHS Compliant

GENERAL SPECIFICATIONS

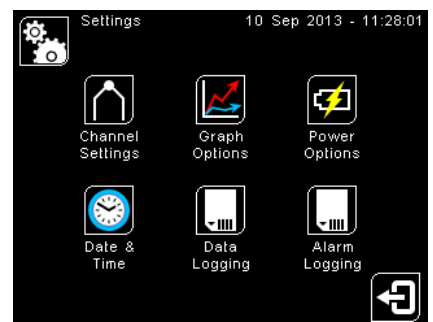
Inputs 4 x thermocouple inputs (any of the below types), for use with miniature thermocouple connectors, and 2 x 3-wire Pt100 inputs, for use with 3-pole stereo TRS 3.5 mm connectors

Input Type	Temperature Range	Accuracy of VersaLog only (whichever is greater)
Type J	-200°C to 1200°C	± 0.1% or 0.8°C
Type K	-200°C to 1372°C	± 0.1% or 0.8°C
Type T	-200°C to 400°C	± 0.1% or 0.8°C
Type R	0°C to 1768°C	± 0.1% or 0.8°C
Type S	0°C to 1768°C	± 0.1% or 0.8°C
Type N	0°C to 1300°C	± 0.1% or 0.8°C
Type E	-200°C to 1000°C	± 0.1% or 0.8°C
Pt100 (3-wire)	-200°C to 850°C	± 1.0% or 1.0°C

Temperature Resolution	0.1° for temperatures below 1000° (C or F) 1° for temperatures above 1000° (C or F)
Display	2.83" (72 mm) resistive touch TFT, 320 x 240 pixels, backlit
Configurable Parameters	Temperature units, alarms, signal processing, date and time, data logging, power options, graph channels
Temperature Units	°F or °C
Alarm Configuration	12 x alarms (2 per channel) with adjustable level, individually configurable as HI or LO.
Signal Processing	Average, minimum, maximum, standard deviation, 2-channel temperature difference
Display Response Time	1 s
Operating Temperature	0 to 50°C
Power Supply	2 x NiMH rechargeable AA batteries >2000 mAh (not supplied), or 2 x alkaline AA batteries > 2000mAh (not supplied), or 5 V DC adapter (included)
Current Draw	250 mA while logging with full display brightness 60 mA (typical) while logging in power saving mode
Weight	180 g without batteries
Dimensions	136(w) x 71(h) x 32(d) mm, without probes

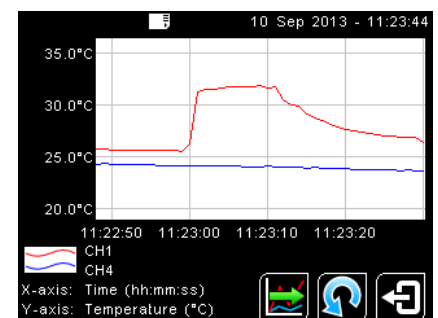
DATA LOGGING SPECIFICATIONS

Data Logging Interval	1 to 86,400 seconds (1 day)
Max. SD Card Capacity	32 GB SD or SDHC (4 GB SD Card included)
Variables Logged	Measured temperature, cold junction temperature, alarm events
File Format	.csv (can be imported to Excel)
Configurable Parameters	Sample period, number of samples, scheduled start date/time



Intuitive touch screen interface

Fully configurable; no additional hardware is required for configuration. Each channel is configurable separately for input type, maths, alarms and display options



Temperature Graph

Two selectable channels are displayed. Scroll back in time to view chart history.

MODEL NUMBERS

VERSALOG 6-channel data logger with 4 GB SD Card, 5 V DC mains adapter and stand

ACCESSORIES

VLMA Spare mains adapter
VLSD Spare 4 GB SD Card
VLCALCERT Calibration certificate, UKAS traceable