

SPECTRORADIOMETER

JPS-100 (350 - 1000 nm), JPS-200 (300 - 800 nm), JPS-300 (300 - 1000 nm)

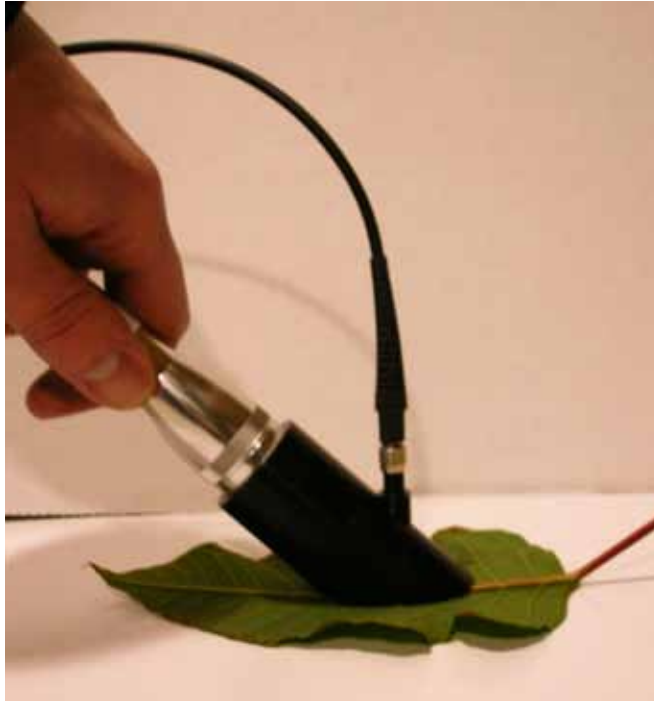


Contents

Parts List.....	2
Setup Diagram.....	3
Order of Connections.....	4
Initial Setup Instructions.....	5
Menu Descriptions.....	7
Control Bar Descriptions.....	9
Status Bar.....	11
The First Two Steps for Every Measurement.....	12
Taking Measurements.....	13
Integration Time.....	15
Spectral Modes.....	16
Three Tips for SpectraWiz.....	18
Applications.....	19
USB2 Cable Installation.....	21
Specifications.....	22



Model JPS-100 with carrying case and reflectance wand



Unique Features of Apogee Spectroradiometers

- Optimized for photobiological applications

JPS-100 (350 - 1000 nm) Parts List

- Spectroradiometer



- USB drive containing SpectraWiz software, calibration files, and manuals



- Fiber-optic cable, 2 meters



- USB2 cable



- Cosine-corrected head w/ black cap



- Leveling plate



- Reflectance wand



- Apogee carrying case



JPS-200 (300 - 800 nm) & JPS-300 (300 - 1000 nm) Parts List

- Spectroradiometer



- USB drive containing SpectraWiz software, calibration files, and manuals



- Fiber-optic cable, 2 meters



- USB2 cable



- Cosine-corrected head w/ black cap



- Rechargeable 5 VDC output battery



- Leveling plate



- 12 VDC output wall mount power supply for recharging battery



- Reflectance wand



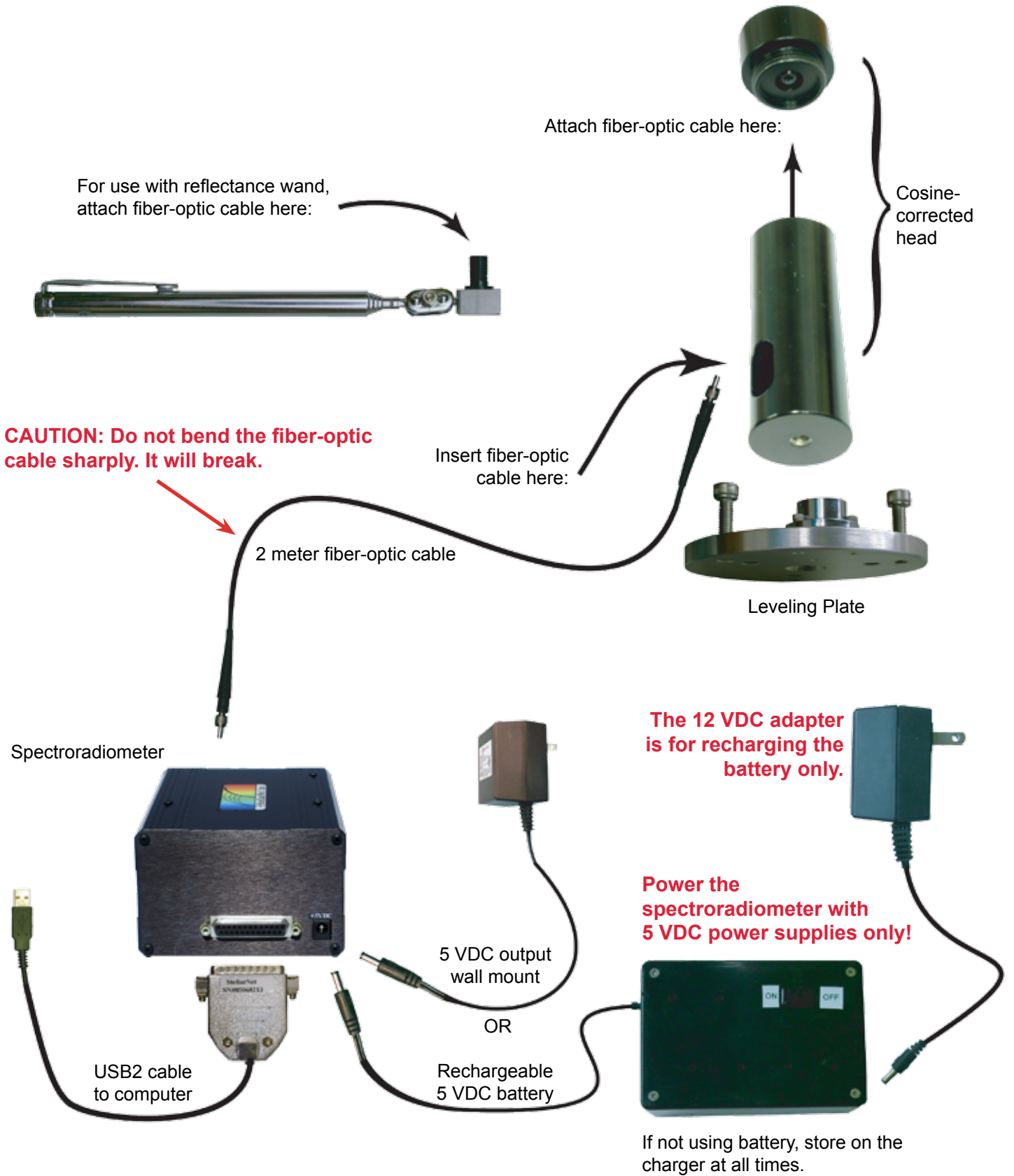
- Apogee carrying case



- 5 VDC output wall mount power supply for spectroradiometer



Setup Diagram



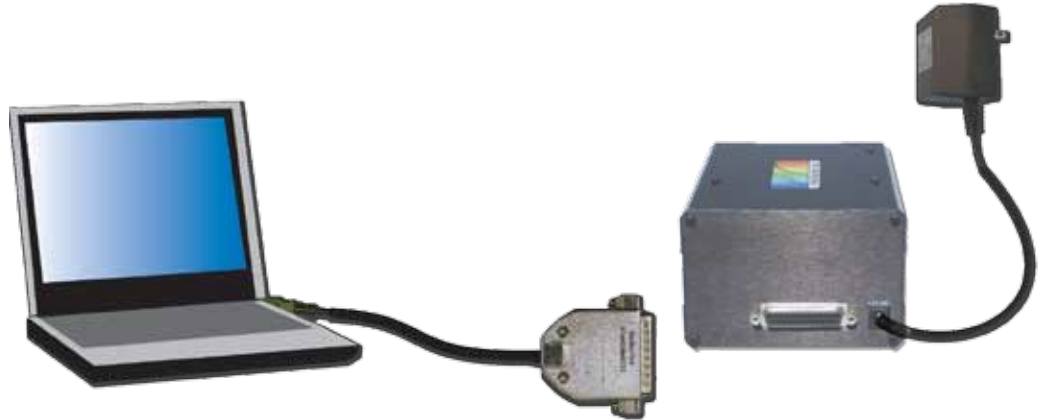
Order of Connections

1. Power the spectroradiometer with battery or wall adapter.

5 VDC adapter or battery only!



2. Connect the spectroradiometer to the PC via the USB2 cable.



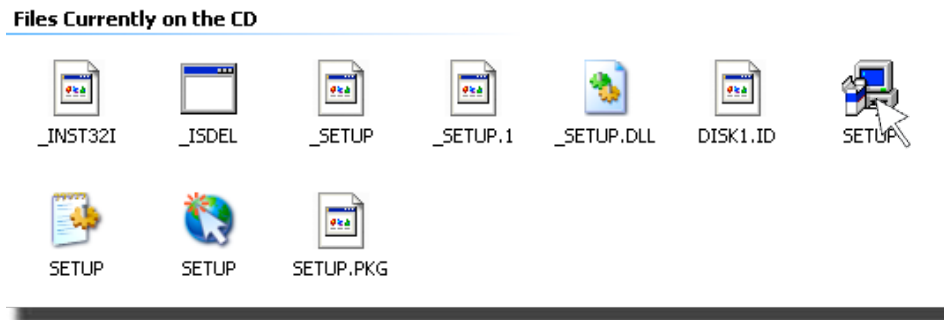
3. Run (or install) SpectraWiz.



Initial Setup Instructions

1. SpectraWiz Installation

Load the CD or USB drive and install the SpectraWiz software. Different versions of SpectraWiz are available and are stored in separate folders according to the computer's operating system. Select the Setup application from the appropriate folder. For Windows XP, select [SpectraWiz Win XP-2k-NT Ver 4.2](#) → [SETUP](#).



Following the software installation, copy and paste the calibration files [sw.ini](#) and [sw1.icf](#) from the USB drive into the SpectraWiz folder that has been created on the hard drive (ex: [C:\Program Files\StellarNet\SpectraWiz](#)). If the pre-programmed laptop is being used, software and driver installations have already been completed and calibration files are already found in the correct directory.

2. Connection to Cosine-Corrected Head

The cosine-corrected head is connected to the spectroradiometer via the fiber-optic cable. The end of the fiber-optic cable with the <-- to spectro label connects directly to the spectroradiometer via the threaded adapter located on the face opposite the 25-pin port. Connect the other end of the fiber-optic cable to the cosine-corrected head by removing the top portion of the head, running the fiber-optic cable through the slot on the bottom portion of the head, and connecting to the threaded adapter underneath the white diffusion disk on top of the head. The leveling plate is designed to connect to the cosine-corrected head via the bolt through the plate and the threaded hole in the bottom of the head. For reflectance measurements, the fiber-optic cable can also be connected to the threaded adapter on the reflectance wand.

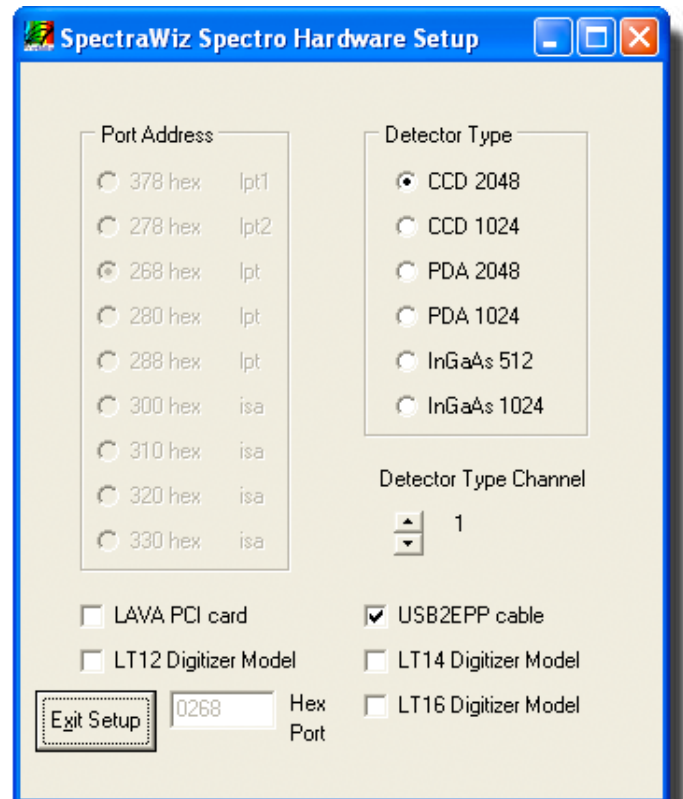
3. Connection to PC, USB2 Cable Installation

The spectroradiometer connects to PC via the USB2 interface cable. The 25-pin male adapter connects directly to the 25-pin female port on the spectroradiometer. The USB2 adapter connects to a USB port on the PC. The drivers used to communicate with and operate the spectroradiometer must be installed on the PC and are found on the software CD and USB drive. As previously noted, the drivers come pre-installed if a laptop was purchased with the spectroradiometer. Before installing the USB2 cable, disconnect any internet connection to the PC to avoid complications. With the spectroradiometer powered and the USB2 cable fully connected, Windows will bring up the Found New Hardware wizard. Do not connect to Windows Update. Windows will automatically find and install the drivers. Detailed instructions concerning driver installation are found on page 22: USB2 Cable Installation.

4. SpectraWiz Setup

Run the SpectraWiz software. A dialogue box titled SpectraWiz Spectro Hardware Setup will appear. Select **CCD 2048** and **USB2EPP** cable. These are the only two options that should be selected. Exit Setup.

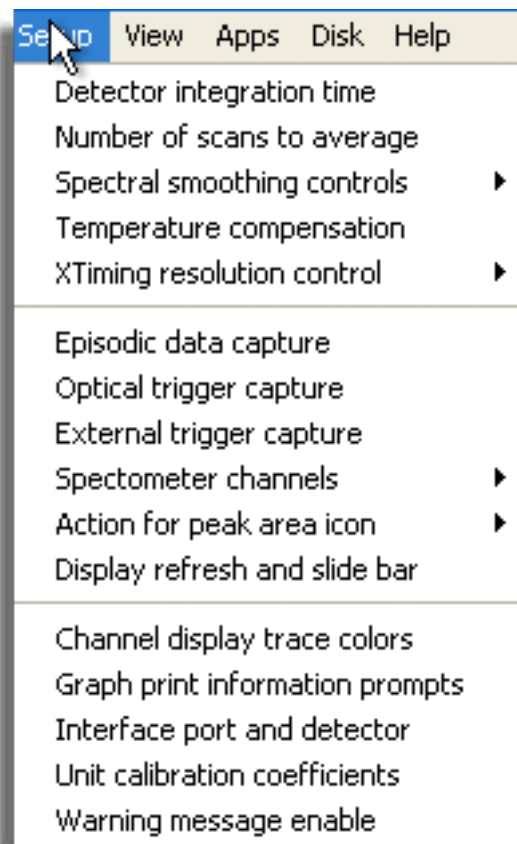
Select **Setup** → **Unit Calibration Coefficients**. Select **OK** and enter the three coefficients listed on the underside of the spectroradiometer one at a time followed by **OK**. The spectroradiometer comes with three factory calibration coefficients only (C1, C2, C3). If prompted for a fourth (C4), enter 0. Repeat this step to verify.



Menu Descriptions

Setup Menu

- **Detector Integration Time:** Exact values may be entered to allow more precise integration time adjustments than the slide bar.
- **Number of Scans to Average:** SpectraWiz automatically averages a user-defined number of scans for each reading. Averaging more scans results in a higher signal-to-noise ratio but increases the time required for each reading that appears on the screen.
- **Spectral Smoothing Controls:** Allows the smoothing of noise in the spectrum at the expense of spectral resolution.
- **Temperature Compensation:** If this option is on, the system will periodically sample the first 30 pixels considered optically black from the detector. This sample is used as a baseline dark reference even when the detector is illuminated. When the level of this reference raises or lowers with temperature, the software adjusts the scan's readout accordingly. We recommend the option always be left on.
- **Xtiming Resolution Control:** Provides increased optical resolutions for spectroradiometers equipped with extended timing (standard), if the spectrograph optics are configured to deliver higher resolution. Low is recommended for fastest performance.
- **Episodic Data Capture:** Saves spectral output over time at either a specified time interval or at user-defined selections.
- **Optical Trigger Capture:** Allows the measurement of camera flash light intensity by prompting to input a control wavelength and signal intensity that must be reached for a signal to be recorded.
- **External Trigger Capture:** Allows capture via TTL signal jack.
- **Spectrometer Channels:** Allows the use of more than one spectroradiometer at a time. Each spectroradiometer should be assigned a channel.
- **Action for Peak Area Icon:** Configures the peak value icon to continuously update or to be defined by the user.
- **Display Refresh and Slide Bar:** Controls the refresh rate (how often the screen updates) and the integration slide bar (time for one scan).
- **Channel Display Trace Colors:** Allows the specification of different trace colors for spectroradiometers on different channels.
- **Graph Print Information Prompts:** Allows customizing of the title line that is printed with the graph. The user is prompted for up to four pieces of information that will print with the graph.
- **Interface Port and Detector:** Configures the interface settings between the computer and the spectroradiometer.



- **Unit Calibration Coefficients:** Allows changing of the calibration coefficients for the spectroradiometer. Three factory calibration coefficients (C1-C3) are located on the underside of the spectroradiometer. Enter 0 for C4.
- **Warning Message Enable:** When enabled, the warning message indicates that a new dark scan and reference scan are required whenever detector integration rate, samples to average, or pixel smoothing are modified.

View Menu

The View menu allows user control of the spectroradiometer's spectral applications:

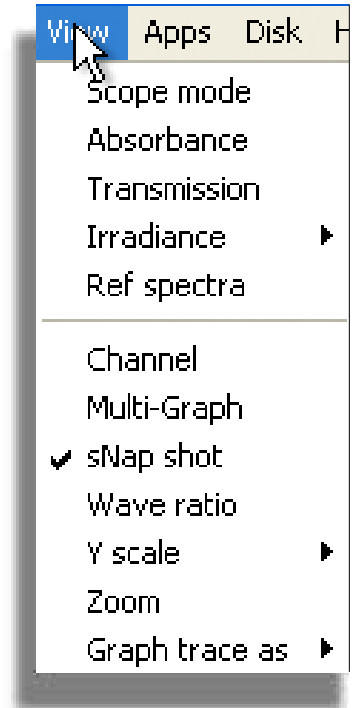
- **Scope Mode:** Displays raw detector output prior to calibration.
- **Absorbance:** Displays absorbance at pixel n using the current sample, reference, and dark data sets by the following equation:

$$\text{Absn} = -\log[(\text{samplen-darkn})/(\text{refn-darkn})]$$
- **Transmission:** Displays percent transmission at pixel n using the current sample, reference and dark data sets:

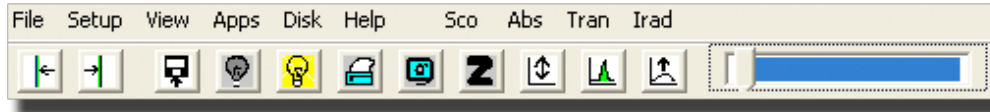
$$\text{Tn} = (\text{samplen-darkn})/(\text{refn-darkn}) * 100$$

Because percent transmission is mathematically equivalent to percent reflectance, the transmission mode is also used to do reflection experiments.

- **Irradiance:** This mode requires instrument calibration and measures units of power ($\text{W m}^{-2} \text{ nm}^{-1}$), photon flux ($\mu\text{mol photons m}^{-2} \text{ s}^{-1} \text{ nm}^{-1}$), and luminosity (lux nm^{-1} or lumens). For photosynthetic lighting, use $\mu\text{mol photons m}^{-2} \text{ s}^{-1} \text{ nm}^{-1}$. For human perception of light, use lux nm^{-1} or lumens.
- **Ref Spectra:** Records a reference spectrum for measurements of absorbance, transmission, and reflection (see page 17: Spectral Modes).
- **Channel:** When multiple spectroradiometer units are hooked up to separate channels (Setup menu), this allows the user to choose which channel to view.
- **Multi-Graph:** Displays spectral traces from multiple spectroradiometer channels; legends and trace colors for the spectroradiometer channels are customized in the Setup menu.
- **sNap Shot:** Freezes a spectral trace (same function as the snapshot icon). To unfreeze, select snapshot again or select the snapshot icon.
- **Wave Ratio:** Provides a continuous ratio value between two user-defined wavelengths.
- **Y Scale:** Allows manual adjustment of the y-scale.
- **Zoom:** When the default wavelength scale is in use, this function allows a customized zooming option for wavelength. If the spectrum is already zoomed in, selecting the zoom button automatically returns the scale to the default settings. Can also be zoomed in by dragging the mouse pointer between wavelengths of interest.
- **Graph Trace As:** Graphing trace as overlay allows multiple spectra to overlay each other in real time. This allows a visual estimate of variance in a sample over time. Graph trace as first derivative or second derivative allows the examination of spectral derivatives, which are used in many studies to remove background from spectral applications.



Control Bar Descriptions



Move Data Cursor/Seek Peak

When either button is selected, a vertical line appears on the graph of the spectrum. At the bottom of the screen, the intensity of the spectrum and the wavelength at the vertical line are reported. The line can be moved to the right or the left by selecting these buttons. To quickly move the line over a large distance, right-click the mouse at the desired wavelength.

Save Sample Spectrum

When this icon is selected, the spectrum freezes and prompts to save the spectrum. The current spectral mode determines the three-letter suffix. The spectral modes include scope (*.SSM), absorbance (*.ABS), transmission (*.TRM), irradiance (*.IRR), reference (*.REF), and dark (*.DRK). When opening files, specify the file type to view the files. Because SpectraWiz is the default directory, it is easiest to create file folders within the SpectraWiz folder to save spectra, rather than elsewhere in Windows. The first time a file is saved after opening SpectraWiz, SpectraWiz will prompt to specify the wavelength range and intervals to be saved.

Save Dark Spectrum/Zero Dark

The dark scan should be performed with the detector covered by a dark scan sensor cover, or by unscrewing the fiber-optic cable and placing a small black cap on the spectroradiometer thread before making measurements. It measures baseline signal (the signal that is present even when there is no incoming light). This should be done every time the integration time is changed. Merely covering the sensor with a hand still allows some light through and can result in measurement errors. Use temperature compensation to automatically update the dark scan when making multiple measurements. [Setup](#) → [Temperature Compensation](#)

Save Reference Spectrum

A reference scan should be recorded before measuring absorbance, transmission, or reflectance. (See page 14: Taking Measurements for a description of how to properly perform a reference scan.)

Print Graph

Prints directly from SpectraWiz. If print prompts have been entered, enter descriptions of the trace being printed, which will appear on the printout.

Snapshot/Copy to Clipboard

Takes snapshot of screen and pastes to clipboard. Snapshot can then be used in another program as a picture file.

X Zoom Info/Y Zoom Enable

Zooms out to fit the entire wavelength range supported by the spectroradiometer in use. Hold down the left mouse button and drag between the wavelengths of interest to zoom in. This function also fits the y-scale to the visible spectral trace.

Rescale Y Axis / Unscale Y

Fits the entire spectrum on the screen by adjusting the y-scale to fit the top of the highest peak. This is useful for zooming out on high-intensity spectral traces that are off screen or for zooming in on low-intensity traces that cannot be seen very well with a large y-scale. If the spectrum still looks chopped off after the vertical fit is adjusted, check to see if signal saturation has occurred (see page 13: The First Two Steps for Every Measurement for details).

Compute Area & Centroid / Setup Manual Cursors

Can be used to pinpoint the light intensity at a specified wavelength, to measure peak parameters (e.g. centroid, peakwave, etc.), or to compute the area under a spectral trace between user-specified wavelengths.

1. Left-click on the icon to display a solid vertical line with a description in the status bar of the spectral trace (wavelength, intensity, etc.) where it intersects with the line.
2. Right-click the graph at the desired wavelength to quickly move the line into place. The line will move to where the cursor is clicked. Smaller adjustments may be made by selecting the peak left/right icons.
3. When the line is in place, the parameters of the nearest peak can be computed by left-clicking the area/centroid icon a second time. For more uses of the area/centroid function, view the Computing Intensity, Peak Parameters, and Area Under a Spectral Trace section on page 18.

AutoTime

Maximizes white light reference spectrum by automatically adjusting detector integration time.

Set Detector Integration Time

Adjusts detector integration time, which is then displayed in the status bar. Longer integration times will take longer to update in the status bar. For precise integration times, set the time manually. [Setup](#) → [Detector Integration Time](#).

Status Bar

SCOPE-> Wave:459.06nm Pix:1050 Val:-3.000 Time:47ms Avg:1 Sm:1 Sg:0 Tc:off Z Y SNAP Xt:3 Ch:1 dt:225

The system indicators are displayed in the status bar at the bottom of the screen. From left to right, the system indicators are as follows:

1. **SCOPE->** : View mode – controlled in the View menu
2. **Wave:459.06nm** : Wavelength – controlled by peak right and peak left icons
3. **Pix:1050** : Pixel number
4. **Val:-3.000** : Y-value at the specified wavelength
5. **Time:47ms** : Integration time – controlled by the integration slide bar or [Setup](#) → [Detector integration time](#)
6. **Avg:1** : Number of scans averaged – controlled by [Setup](#) → [Number of scans to average](#)
7. **Sm: 1** : Pixel box car smoothing coefficient – controlled by [Setup](#) → [Spectral smoothing controls](#) → [Pixel box car](#)
8. **Sg:0** : Savitzky Golay smoothing coefficient – controlled by [Setup](#) → [Spectral smoothing controls](#) → [Savitzky Golay](#)
9. **Tc:off** : Temperature compensation – controlled by [Setup](#) → [Temperature compensation](#)
10. **Z** : X-scale zoom on – controlled by zoom button, dragging on the graph screen, or [View](#) → [Zoom](#)
11. **Y** : Y-scale zoom on – controlled by vertical fit button or [View](#) → [Y scale](#)
12. **SNAP** : Snapshot activated – controlled by snapshot button
13. **Xt:3** : Xtiming resolution – controlled by [Setup](#) → [Xtiming resolution control](#)
14. **Ch:1** : Spectroradiometer channel – controlled by [Setup](#) → [Spectrometer channels](#)
15. **Range Error** : Warning message in irradiance mode when the integration time is set too high. Change the integration time using the slide bar or [Setup](#) → [Detector integration time](#)

Many system indicators appear in the status bar only when their function is activated.

The First Two Steps for Every Measurement

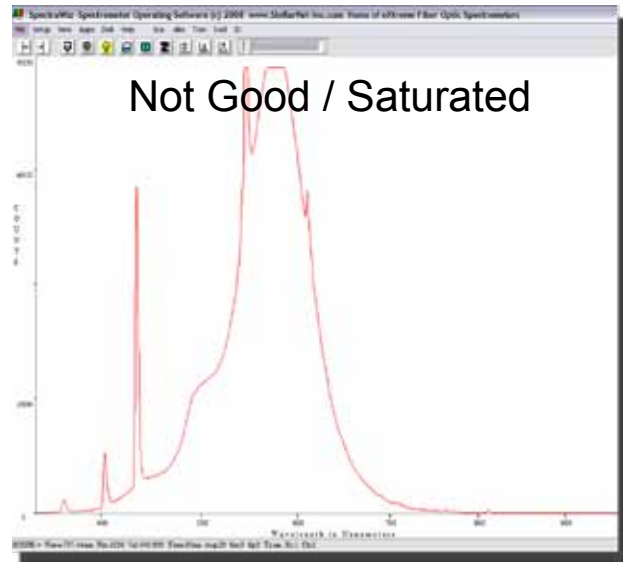
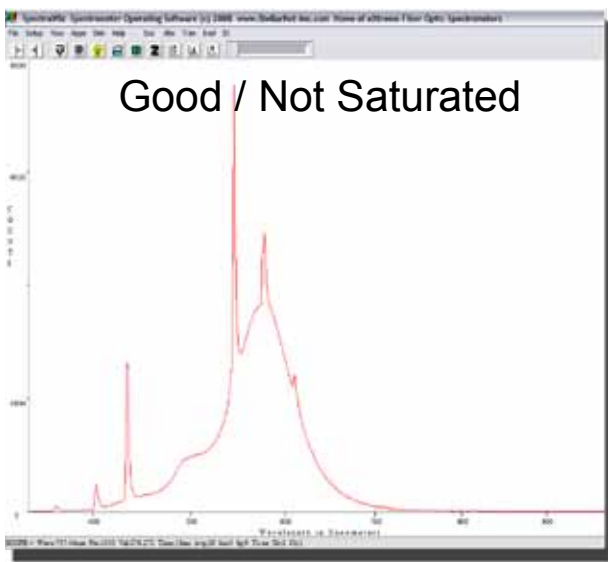
1. Set Detector Integration Time

The detector integration time is like the shutter speed on a camera: it controls the amount of light reaching the detector. An integration time that is too high exposes the detector beyond its range and saturates the readings viewed. A low integration time lacks the exposure to take clear readings.

The integration time must be correctly set before use of the spectroradiometer in a new setting.

- A. Set the view to scope mode: **View** → **Scope Mode**
- B. Set the integration time as high as possible without saturating: **Setup** → **Detector Integration Time**. This will require experimentation.


Examples of cool white fluorescent (CWF) spectra in scope mode



*NOTE: The ideal integration time for a given light source must be determined while in Scope Mode. Changing the mode in the View menu will bring up a prompt. Press **OK** to reset the integration time to a default value determined during calibration, or press **Cancel** to keep the current integration time.*

See page 16: Integration Time for more detailed instructions on setting correct integration time.

2. Take Dark Scan

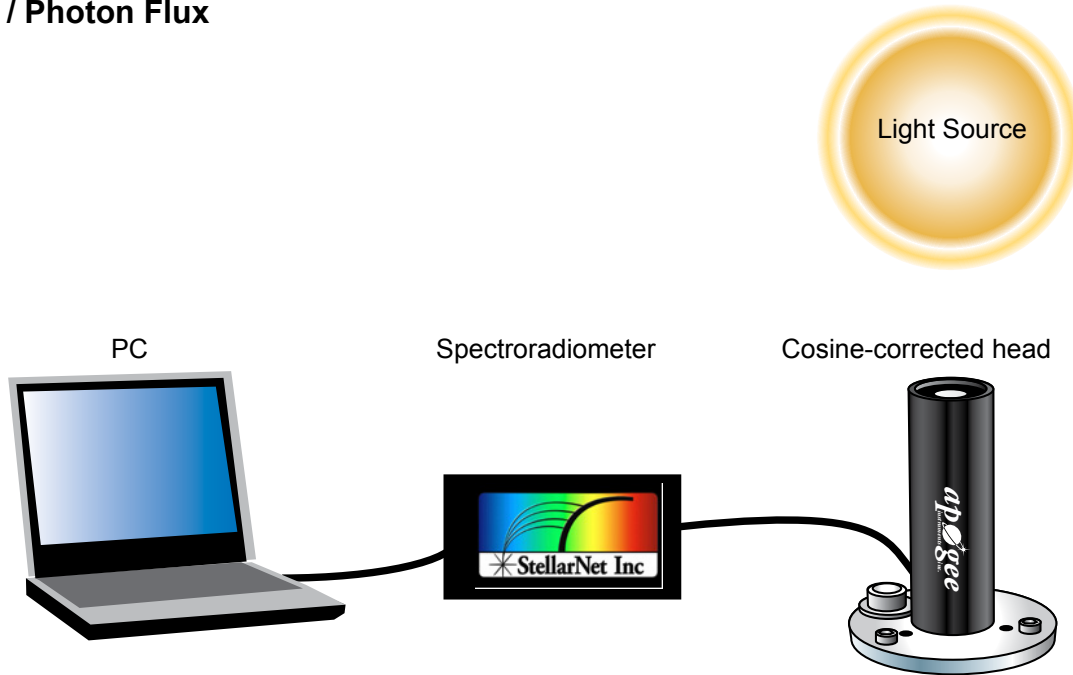
A dark scan is the equivalent of zeroing the instrument. The user must perform a dark scan each time changes are made in the Setup menu, including the detector integration time. This is done by covering the end of the fiber-optic cable or cosine-corrected head and selecting the dark spectrum icon  on the control bar. Another method is to unscrew the fiber-optic cable from the spectroradiometer and place the small black cap on the thread before selecting the dark spectrum icon. Double check that the Y-value in the status bar is within one to two counts of zero before resuming measurements. Remove the dark scan cap by pulling up on one side.



Taking Measurements

This section will briefly tell how to make three basic types of measurements, each recommended for specific studies or experiments. **Irradiance/Photon Flux** can be used to measure distinct light sources for comparison of spectral characteristics, such as compact fluorescents versus sunlight. **Reflectance/Transmittance** can be used to determine the health of leaf samples, compare reflectance of materials, and measure transmittance of light through dry samples, using a reflectance standard. **Absorbance** can be used to measure the absorption spectra of liquid samples and other transparent or semi-transparent materials. See page 17: Spectral Modes for more details on each of these types of measurements.

Irradiance / Photon Flux

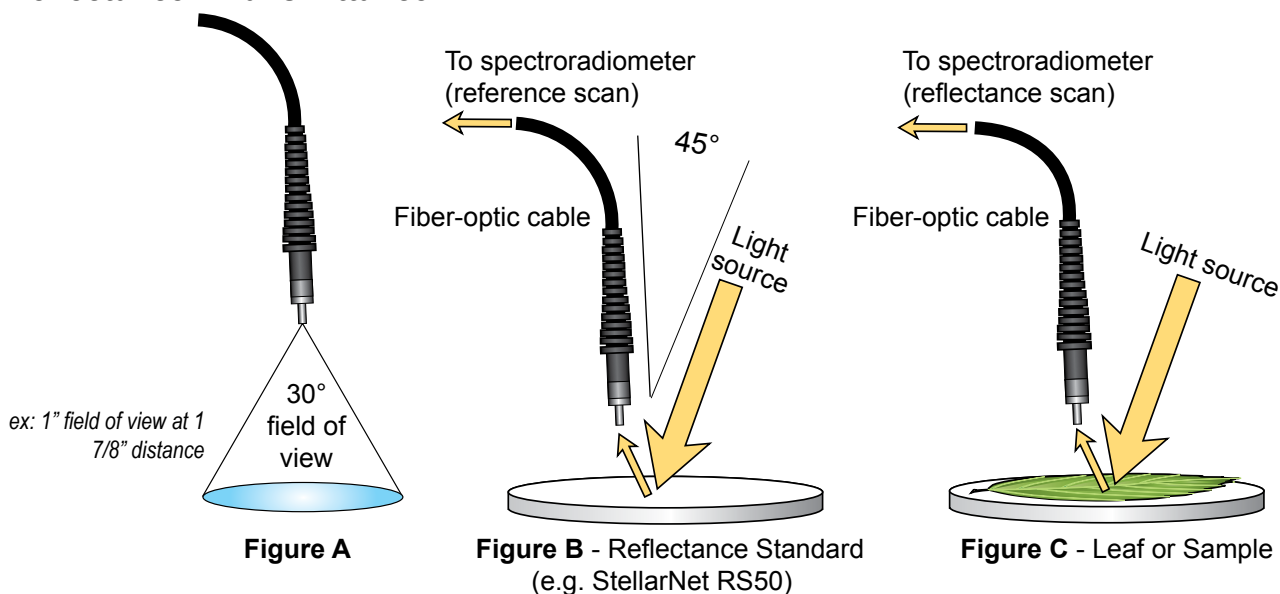



1. Determine the integration time and save a dark scan as described on page 13: The First Two Steps for Every Measurement.
2. Make sure temperature compensation is on: [Setup](#) → [Temperature Compensation](#)
3. [View](#) → [Irradiance](#) and select Watts per m^{-2} , $\mu mol m^{-2} s^{-1}$, or lux m^{-2} as desired.
4. In the view mode selected, re-enter the integration time determined in scope mode.
5. To look at light intensity at a given wavelength, right-click the cursor at the wavelength. Fine-tune the position of the displayed line using the peak left and right icons.
6. Save scan. A prompt will ask for a location to be specified for saving. A second prompt shows export parameters, including Starting Wavelength, Wavelength Increment, and Ending Wavelength.

Exporting to Excel

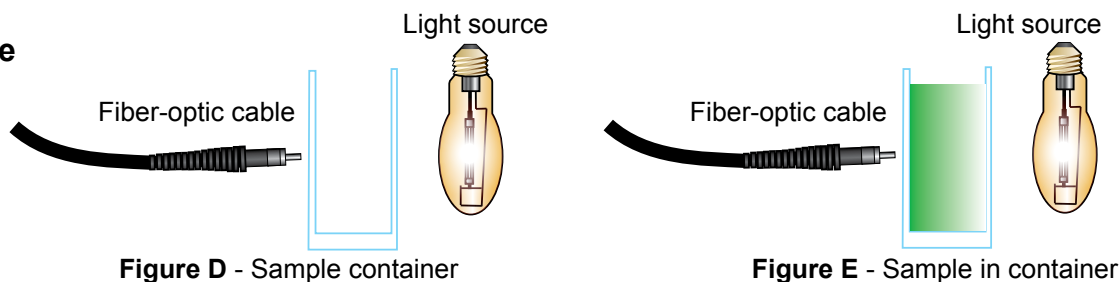
Data will output as an .IRR file, which can be imported into Excel. The data will be delimited by spaces. In Excel, click on [Data](#) → [Import External Data](#) → [Import Data](#). Search by filetype All Files (*.*) in the location where the file was saved. In the Import Wizard, select [Next](#) → [Space for delimiters](#) → [Finish](#) → [OK](#). Data will import to 3 columns: one for filename, one for wavelengths (default is 0.5 nm increments), and one for sensor readings. The third column may need expanding to view readings.


Reflectance / Transmittance



1. Determine the integration time and save a dark scan.
2. Save a reference scan using a reflectance standard as shown in Figure B. For reflectance and transmittance measurements, the sample reading is divided by the reference reading to give percent reflectance (transmittance). For transmittance, use the setup shown for irradiance on page 14 when taking a reference scan.
3. View transmittance mode: [View](#) → [Transmittance](#) (re-enter the integration time).
4. Save scan  with the fiber optic cable held or mounted as shown in Figure C for reflectance. For transmittance, use the setup shown for irradiance on page 14 and place the sample over the sensor.
5. See Exporting to Excel on the previous page for instructions on importing data into Excel. Data will appear as a .TRM file.

Absorbance



1. Determine the integration time and save a dark scan.
2. Save a reference scan as shown in Figure D.
3. View transmittance mode: [View](#) → [Absorbance](#) (re-enter the integration time now).
4. Save scan  with the fiber optic cable held or mounted as shown in Figure E.
5. See Exporting to Excel on the previous page for instructions on importing data into Excel. Data will appear as an .ABS file.

Integration Time


About the Integration Time

The current integration time is displayed on the status bar at the bottom of the screen (e.g. Time:100ms). This is the amount of time in milliseconds that the spectroradiometer records for a single measurement. A multi-element array spectroradiometer is like a camera: a short integration time is like a fast shutter speed. The detectors in the spectroradiometer are like camera film: in low light it is hard to see details unless the shutter speed is increased to allow more light to reach the film. Bright light overexposes the film unless the shutter speed is reduced. A long integration time increases sensitivity in low light, but the detectors over-range (saturate) with long integration times in high light. The integration time should be adjusted to obtain the best exposure.

The proper integration time for a given light level will vary depending on the spectrum of the light. 200 μmol from fluorescent lamps will cause a range error at 700 ms but 200 μmol from an incandescent lamp won't over-range below an integration time of 2000 ms. This is due to the sharp radiation peaks of the fluorescent lamps at distinct wavelengths (e.g. ~400, 450, and 550 nm).

How to Set the Integration Time

For each given light source the optical integration time must be determined. The software will prompt the user to restore integration time to default when view mode is changed. Current integration time can be kept by selecting [Cancel](#).

1. Set the view to scope mode: [View](#) → [Scope Mode](#)
2. Set the integration time as high as possible without saturating: [Setup](#) → [Detector Integration Time](#)
3. Adjust integration time by ± 5 ms to check for saturation in the highest peak. The highest peak in the scan should crest as a single sharp vertical line. Saturation will cause this line to shorten as the integration time is increased. High saturation appears as a horizontal plateau across the crest of the peak. When saturation occurs, decrease the integration time by 5 ms, then wait for the vertical line to lengthen and move slightly downward from the top of the window. This may require several adjustments.
4. Cover the sensor head with a black cap and save a dark scan by selecting the dark spectrum icon.  A dark scan should be taken whenever the integration time is changed.
5. If a view mode such as irradiance is being used, return to that mode. Press [Cancel](#) to keep current integration time or [OK](#) to reset integration time to default.

While in irradiance mode, over-ranging is indicated by a flashing warning message at the bottom of the screen that says [RANGE ERROR](#). When this occurs, press [Cancel](#) to override error message and keep current settings.

Spectral Modes


Reflectance, Transmittance, and Absorbance Measurements

Reflectance and transmittance are both measured as percent of the incident incoming radiation using transmission mode: [View](#) → [Transmission](#). Absorbance is a measure of optical density and is measured using absorbance mode: [View](#) → [Absorbance](#).

Side light creates error in reflectance measurements so they should be conducted without the cosine-corrected head using the bare end of the optical cable. The optical cable only has a 30° angle of view, resulting in a ~2:1 ratio (distance from sample to width of sample), so it is not influenced by side light when used in close proximity to the sample surface. A high-reflectivity reference standard is used to eliminate side light error in the measurements of incident incoming radiation (reference scan) for reflectance. For transmittance, the cosine-corrected head creates a broader view area for the sensor, but the entire head must be covered by the sample to prevent side light error.

These measurements also work best with a high input signal. Therefore, set the mode to scope mode first: [View](#) → [Scope Mode](#) and increase the detector integration time until the reference reading has a high signal (above 2500 counts) while making a reference scan.

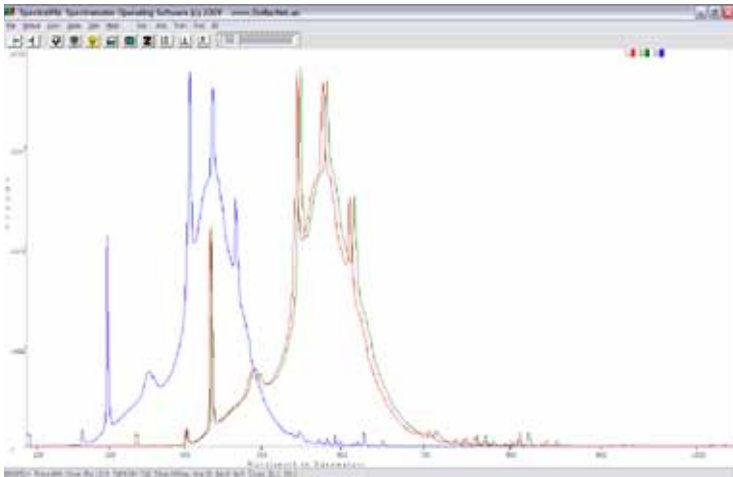
Make a new dark scan whenever the integration time is changed.

- **Reference Scans** should be made using a high-reflectivity reflectance standard. This standard should be held at the same distance from the light source as the sample or leaf being measured. Aim the detector directly at the reflectance standard from a distance of about two inches. Make sure there are no shadows on the reflectance standard. Record a reference scan by selecting the reference spectrum icon or [File](#) → [Save](#) → [Reference](#). 

When using the JPS-100 & 300 models, be careful not to saturate the signal in any region of the spectrum; the region from 500-600 nm is most sensitive. Saturation of signal is seen as a flat line at the top of the spectrum display and corresponds with a y-scale of 4000 counts in scope mode. If the signal is saturated, decrease the detector integration time and take new dark and reference scans.

- **Reflectance Measurements** should be made by pointing the sensor straight down about two inches above the sample. Adjust the distance depending on the view area being measured. The percent of light reflected at each wavelength is shown in transmission mode: [View](#) → [Transmission](#)
- **Transmittance Measurements** are made with a setup identical to irradiance measurements. First take a reference scan with the sensor two inches below the light source (do not use a reflectance standard). Place the sample or leaf directly over the top of the cosine corrected head. The percent of light at each wavelength transmitted through the leaf or sample is shown in transmission mode: [View](#) → [Transmission](#)
- **Absorbance Measurements** are typically used for measuring the absorption spectra of liquid samples. This feature is similar to the use of a bench top spectroradiometer for measuring chemical concentrations in a liquid sample. The output is equal to $-\log(\text{Transmittance})$ and is shown in absorbance mode: [View](#) → [Absorbance](#) (see page 21 on Chemwiz).

Overlaying Multiple Spectra



To overlay multiple saved spectral traces:

Open and navigate to the files folder. Hold down the shift key (for contiguous files) or the control key (for non-contiguous files) to select multiple files before selecting **Open**. Each spectral trace is graphed in a different color. Excel is capable of importing files created by SpectraWiz. The data is delimited with spaces. See page 14: Taking Measurements for detailed instructions on importing data into Excel.

To overlay traces in real time:

(All spectral traces are graphed the same color)

[View](#) → [Graph Trace As](#) → [Overlay](#)



Computing Intensity, Peak Parameters, and Area Under a Trace

The area/centroid icon can be used to pinpoint the light intensity at a specified wavelength, to measure peak parameters (e.g. centroid, peakwave, etc.), or to compute the area under a spectral trace between user-specified wavelengths.

1. Left-click the icon to display a solid vertical line with a description in the status bar of the spectral trace (wavelength, intensity, etc.) where it intersects with the line.
2. Right-click the graph at the desired wavelength to move the line into place. The line will move to where the cursor is clicked. The line may also be moved by selecting the peak left/right icons, but this is slow and should be used only for final adjustments.
3. When the line is in place, the peak parameters of the nearest peak can be computed by left-clicking the area/centroid icon a second time



Computing the Area Between User-Specified Wavelengths

1. Select the area/centroid icon.
2. Move the solid line to the first wavelength of interest.
3. Right-click the area/centroid icon. The solid line will change into a dashed line that becomes the starting point of the area measurement.
4. Right-click the graph at the desired ending wavelength; a second dashed line will appear where the mouse is clicked. This line may then be adjusted by right-clicking or by using the peak left/right icons.
5. When both lines are in place, right-click on the area/centroid icon again. A dialogue box will appear and ask if a local baseline based on the starting point should be used. Selecting **Yes** will compute the area between the two dashed lines above the intensity at the starting point, and selecting **No** will compute the entire area under the curve between the two dashed lines with a zero baseline.

Three Tips for SpectraWiz

1. Set a Photosynthetically Active Radiation (PAR) Range

The SpectraWiz software includes a useful tool for measuring specific spectral regions (e.g. UV only), but the wavelength range must be set to integrate from 400 to 700 nm to measure Photosynthetically Active Radiation (PAR).

Select [View](#) → [Irradiance](#) → [Setup Range for Watt and Rflux measurement](#). Select [400](#) as the start and [700](#) as the end of the wavelength range. This range will remain set until it is changed again, but should be checked after installing new software updates.

2. Change the Number of Scans to Average

Under the Setup menu select [Number of scans to average](#) and enter the desired number.

Increasing the number of scans to average improves the signal-to-noise ratio but increases the time required to take each reading. At low integration times averaging several scans can be done quickly. At higher integration times, readings may benefit from an average but will require more time. Using an average of three to ten scans is helpful for most applications. An average of three to ten scans during a dark scan will more accurately zero the instrument.

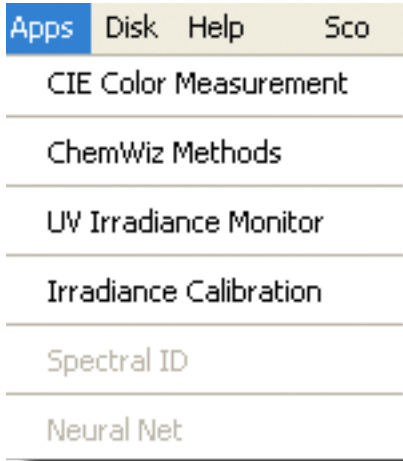
3. Manage Calibration Files for Multiple Spectroradiometers

There are two unique calibration files for each spectroradiometer. They are named [sw1.icf](#) and [sw.ini](#). These files must be in the SpectraWiz folder where SpectraWiz was installed. If only one spectroradiometer is being used, leave these files as they were installed.

To connect multiple spectroradiometers to the same computer (such as a JPS-100 and a JPS-200), the calibration files will need to be managed. The software must be prevented from utilizing the wrong files. Indicate the files to be overlooked by changing their file names. For example, rename the calibration files for the spectroradiometer not being used to [swUV.ini](#) and [sw1UV.icf](#).

It is best to make separate folders (e.g. NIR Cal Files and UV Cal Files) inside the SpectraWiz folder to help keep them separate. Change the names of the files but not the extension. They need to be changed back to [sw1.icf](#) and [sw.ini](#) when in use or SpectraWiz will not recognize them.

Applications



The Applications menu allows color monitoring, solution concentration predictions, and irradiance and wavelength calibration.

CIELAB

This CIELAB application performs color measurement using the International Commission on Illumination (CIE) techniques. The application provides a chromaticity diagram for irradiance and a SpectroColorimeter function for reflectance.

Color of Irradiant Light

[View](#) → [Irradiance Mode](#)

For irradiance (watts per m²) and for luminosity (lumens), the color of light is displayed using the xy chromaticity diagram and the related dominant wavelength.

Color of Reflected Light

[View](#) → [Transmission Mode](#)

The color of reflected light is displayed using the CIELAB circular graph for a* and b*. The L* is the color lightness and is displayed in a bar graph. The CIELAB Colorimeter function uses the following routine to calculate color:

The colorimeter function derives tristimulus values (proportions of red, green, and blue in spectrum) from the spectral reading

1. The CIELAB uniform color space is calculated from the tristimulus values
2. L* is the lightness from 0 to 100
 - a. a* and b* are color values
 - b. between -60 and +60
3. Tolerancing is used to determine color differences (delta E)

The rectangular coordinates on the chart also relate to the tristimulus values. The application allows user selection of CIE Standard Illuminants A, B, C, D50, D55, D65, D75 and fluorescent lamps F1 to F12. Selecting the type of illuminant that is being used allows the program to compensate for the relative spectral power distributions of the light source. The default illuminant is D65 (daylight). The L* a* b* values are displayed in circular color chart that is updated several times per second, depending on the user-selected sample rate and sample averaging. If a fiber-optic reflection probe is moved across a spectral color chart, a data cursor can be seen to move in a circle around the CIELAB color chart.

Use the Save Standard function to save a sample that can be loaded at a later time to compare with other samples. The Delta E* is the square root of the sum of the squares of the L* a* b* and is used to determine if another sample is similar. If Delta E* is 3 or greater, then the test sample is considered a different color than the selected standard.

Color Analysis

1. Set the detector integration time to accommodate lighting (see page 13: The First Two Steps for Every Measurement).

2. Change the Setup parameters as follows:

Number of scans to avg = 4 or higher: [Setup](#) → [Number of Scans to Average](#)

Pixel smoothing = level 4: [Setup](#) → [Spectral Smoothing Controls](#)

Temperature compensation = ON: [Setup](#) → [Temperature Compensation](#)

3. Save a dark reference and a white reference (using, for example, StellarNet's RS50 reflectance standard) while in the Scope mode. Make sure that the bell curve response does not saturate at the top peak (see page 16: Integration Time). For the best results using a reflectance probe, use a fixture that holds the tip at the same distance from each sample. Apogee carries such a probe with a built-in light source (Model: Reflectance Probe).
4. Enable the CIELAB Color Monitor application. The New Reference button allows a standard white reference to be taken at any time. This should give an L value of 100 in the bar graph. Most of the SpectroColorimeter buttons are self-explanatory. Save Sample allows samples to be rapidly recorded into a [colordata.log](#) file for subsequent viewing or printing.
5. Use the Save Standard function to save a sample that can be loaded at a later time to compare with other samples. The Delta E* is the square root of the sum of the squares of the L* a* b*, and is used to determine if another sample is similar. If Delta E* is 3 or greater, then the test sample is considered a different color than the selected standard.

ChemWiz

ChemWiz allows users to create calibration curves of specific chemical concentrations and predict chemical concentrations based on these curves. Because these methods require an accessory configuration, please contact Apogee for assistance.

Once a method has been configured, it can be opened to operate in real-time. When a method is opened, SpectraWiz automatically sets all the system parameters required by the specified method (including detector integration time and all of the Setup menu parameters) and begins running. Load the zero concentration reference in a cuvette and press the Zero Reference button. If a second spectroradiometer is not being used for automatic lamp drift correction, perform a Zero Reference as often as possible. A [chemdata.log](#) file allows users to quickly save samples for later viewing or printing.

USB2 Cable Installation

1. Disconnect the internet connection to the PC. Do not allow Windows to connect to Windows Update.
2. Power the spectroradiometer.
3. Connect the USB2 cable to the spectroradiometer and one of the USB ports on the PC. This will prompt the following wizard:



4. Select **No, not at this time** and select **Next**.
5. Select **Install the software automatically**.
6. The driver will usually automatically load and will state that the USB device has been properly installed. If it does not automatically install, use the wizard to install from a list or specific location. The drivers are located at **D:\EPP_USB2EPP DRIVERS\SWDriver-USB2EPP\Win9x for Windows 95/98/ME** or **D:\EPP_USB2EPP DRIVERS\SWDriver-USB2EPP\Win2k for Windows 2000/NT/XP** assuming the CD is drive D.
7. Verify the cable installation by right-clicking **My Computer** and then selecting **Properties** → **Hardware** → **Device Manager** → **USB Device Stellarnet USB2epp Cable**.

Specifications

Wavelength Range

- JPS-100: 350 to 1000 nm
- JPS-200: 300 to 850 nm
- JPS-300: 300 to 1000 nm

Base Unit Size

- JPS-100: 15.5 * 9.5 * 4 cm
- JPS-200: 15.5 * 11 * 8 cm
- JPS-300: 15.5 * 11 * 8 cm

Base Unit Mass

- JPS-100: 500 g
- JPS-200: 900 g
- JPS-300: 900 g

Detector

- 2048 pixel; 14 * 200 um microelement array

Linear Range

- 0 - 2.1 absorbance units (< 0.5%)

Exposure Range

- 4 milliseconds to 60 seconds
(synoptic multi-channel)

Integration Time Range

- 4 to 6500 ms

Power Supplies

The spectroradiometer should never be powered with AC power supplies. Power the spectroradiometer with 5 VDC. This is a relatively small voltage. Common alarm clocks use a 9 VDC battery.

Warning: Exceeding 5 VDC will cause damage to the instrument.

Battery Life

Battery life with continuous scanning is about 5 hours on a full charge (the laptop's battery may be less). This power supply uses a sealed, lead-acid battery, the same type of battery used in automobiles. Lead-acid batteries have an exceptionally long life if maintained as close to full charge as possible. Completely draining this battery (more than six hours of continuous scanning) shortens its life expectancy, so it should be charged after each use. This differs from the Nickel-Cadmium or Metal Hydride batteries used in laptop computers, which have memories and which should be depleted before recharging. The lead-acid battery in this power supply cannot be over-charged and it should be kept plugged in as much as possible to keep the battery at full charge. When it is unplugged there is a slow discharge in the 12 V battery through the 5 V converter. An unplugged battery will deplete completely after about a month of storage.

Fiber-Optic Cable

While the fiber-optic cable is housed in an armored case, it still has a glass core and cannot be bent at the same acute angles as electrical cable. If the cable is crimped or pinched it can break the glass core and result in incorrect readings. Never use any amount of force to make bends in the cable.

Input Power

- 220 - 250 mA at +5 VDC (provided)

Optical Cable

- 2 meters armored cable; cables are not interchangeable

Wavelength Resolution

- 0.5 nm

Wavelength Repeatability

- < 0.05 nm

Wavelength Stability

- < 0.001 nm per °C

Dynamic Range

- JPS-100: 1 to 65536 counts ($\pm 0.5\%$)
- JPS-200 & 300: 1 to 16395 counts ($\pm 0.5\%$)

Signal to Noise Ratio

- Up to 1000:1

Warranty

- 1 year against defects in materials and workmanship