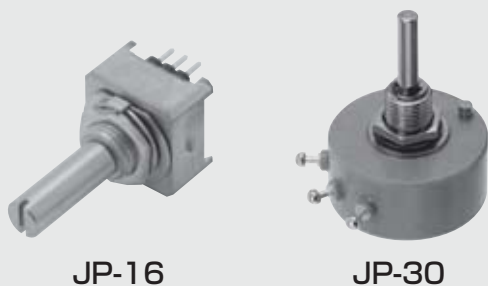


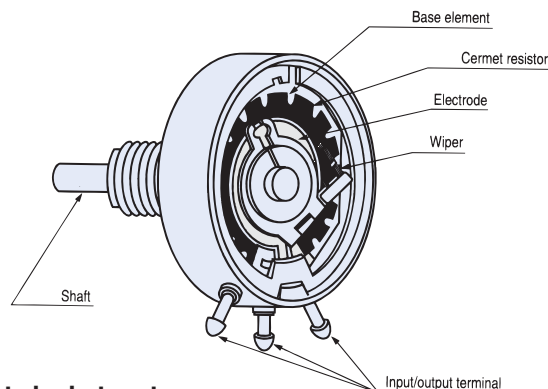
# CERMET SINGLE TURN TYPE

# JP series

RoHS compliant



## Basic construction



## Cermet single turn type

## FEATURES

- Cost effective (In house comparison)
- High resolution (Essentially infinite)
- RoHS compliant

## PART NUMBER DESIGNATION

JP-16-C1k

Series name

JP-16 : For sensor  
JP-30 : For sensor

Snap-in holder

Blank : Without  
C : With

Nominal resistance value (Ω)

500, 1 k, 2 k, 5 k, 10 k, 20 k, 50 k, 100 k

## STANDARD SPECIFICATIONS

Item	Part number	JP-16	JP-30
Resistance tolerance	%	± 2	
Resolution		Essentially infinite	
Independent linearity	%	± 0.5	
Effective electrical angle		300° ± 1°	
Mechanical angle		360° continuous	
Power rating (at 40 °C)	W	1.0	1.5
Dielectric strength	Vrms	1000 1 min	
Insulation resistance	MΩ minimum	1000 (at DC500 V)	
Rotational torque	mN·m {gf·cm}	2.94 {30} maximum	
Peak noise		2 % or 100 Ω, whichever is greater	
Temp. coefficient resistance	10 <sup>-6</sup> /°C	± 150	
Operating temp. range	°C	-55 ~ 85	
Maximum rotational speed	r/min	150	
Rotational life		3 million revolution	
Net weight	g	Approx. 15	Approx. 26
Strength of tighten screw		0.98 N·m {10 kgf·cm} maximum	

\* Perform soldering of the terminals at 380 °C for no more three seconds, and avoid applying excess heat. Also, avoid applying outside force to the terminals.  
In case of using multiturn potentiometers, when rotating the shaft to the mechanical limit, apply torque below the strength of the stopper. Also, give due consideration to thrust and radial loading.



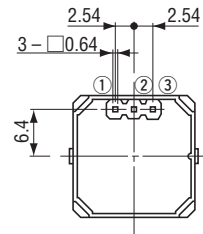
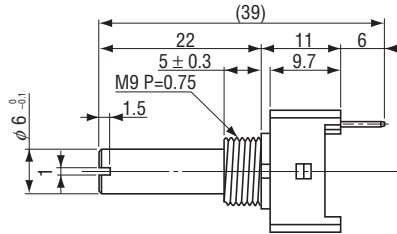
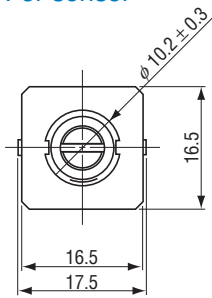
# JP POTENTIOMETERS

## OUTLINE DIMENSIONS

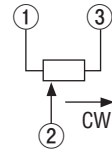
Unless otherwise specified, tolerance:  $\pm 0.5$  (Unit: mm)

### ● JP-16

For sensor

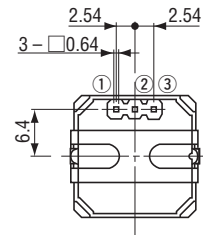
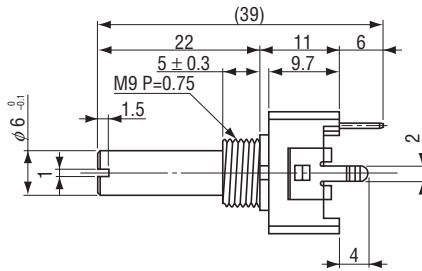
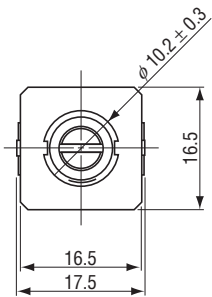


Wiring diagram



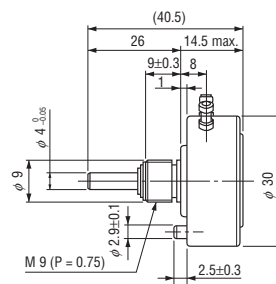
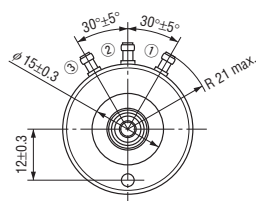
### ● JP-16-C

For sensor with mounting bracket

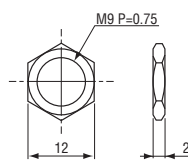


### ● JP-30

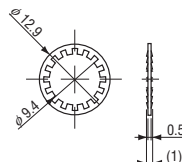
For sensor



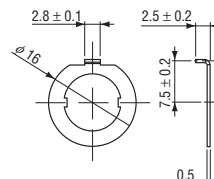
## (Accessories)



1. Nut



2. Washer



3. Locking ring (JP-16)