

Instantaneous Flow-Rate · Integrating Flow Volume Flowmeter



Model NW (Local display type)

Model NW-P (With pulse output)



Features

- Built-in lithium batteries (No external power supply is required)
- Indications of both instantaneous flow-rate and integrating flow volume by only 1 flowmeter
- Revolving display unit (It can be fixed to a easy-to-read position)
- Simplified structure with the vane wheel type measuring principle
- Measurement of various liquids
- Reset function for indications of Integrating Flow Volume (Total) and Integrating Flow Volume (Trip)
- Value holding function for Instantaneous Flow-Rate indication
- Pulse output function (Option)

Specifications

Instantaneous flow-rate · Integrating flow volume flowmeter NW Type		NW05-NTN	NW05-PTN	NW05-TTN	NW10-NTN
Instantaneous flow-rate · Integrating flow volume flowmeter (with pulse output) NW-P Type		NW05-NTP	NW05-PTP	NW05-TTP	NW10-NTP
Flow-rate range (m3/h)		0.3 – 3L/min			1.5 – 20L/min
Accuracy	Flow-rate indication	+/-2%RS+/-0.05L/min			+/-2% RS+/-0.2L/min
	Volume indication	+/-2%RS (with the standard installation position)			

Measurable fluids		Various liquids (Please select with reference to the following major materials of the liquid-touching materials)			
Max. Working Pressure		1MPa (at the time of fluid temperature of 20°C)			
Pressure Drop		Not more than 12kPa (At the time of 3L/min)		Not more than 20kPa (At the time of 20L/min)	
Fluid viscosity range		0.5 – 1.5mPa · s			
Fluid temperature range		0 – +60°C			
Ambient temperature range		0 – +60°C 35 – 85%RH(Dew condensation must be avoided)			
Output signal (for NW-P)		<ul style="list-style-type: none"> • Open drain output (Equivalent to open collector) • Pulse width: Not less than 5ms • Max. rating voltage: 30 VDC • Output capacity: “ON resistance” Not more than 150Ω, “OFF resistance” Not less than 100kΩ (Remained voltage not more than 1.5V in case of input current not more than 10mA) 			
Pulse unit (for NW-P)		10mL/p		1L/p	
LCD	Flow-rate	Smallest Scale	0.05L/min		0.2L/min
		Display digits	00.00L/min		000.0L/min
	Volume	Display digits	000000.00L		0000000.0L
Power supply		Built-in lithium battery (Battery life 4 years. Not replaceable.)			
Structure		IP64 equivalent, Indoor installation			
Connection		R1/2			
Meter Weight		Approx. 280g		Approx. 250g	
Major materials of the liquid touching parts	Casing	Denatured PPO	PP	ETFE	Denatured PPO
	Vane wheel	POM		ETFE	POM
	Pivot	SUS304	PA	ETFE	SUS304
	O-ring	NBR	FKM		NBR
	Magnet	Sa-Co ※1		Ba-Fe	

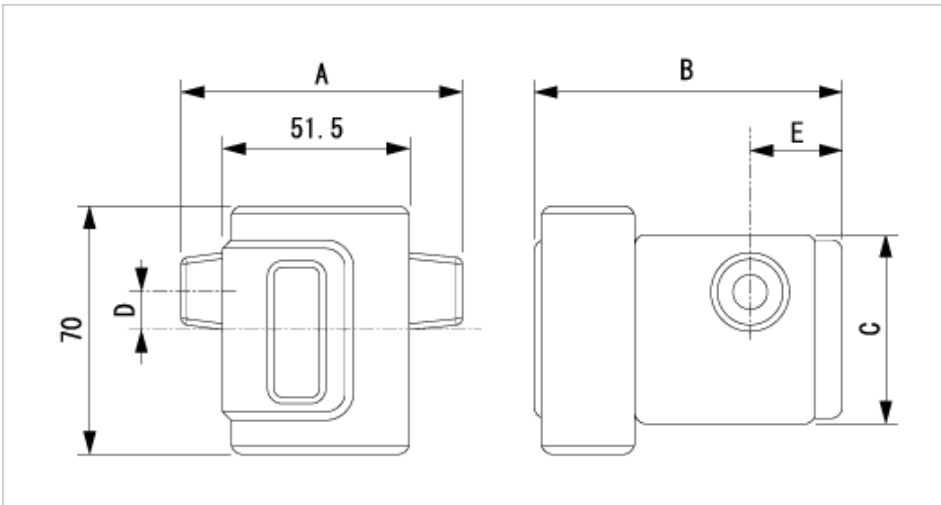
Instantaneous flow-rate · Integrating flow volume flowmeter NW Type		NW10-PTN	NW10-TTN	NW20-NTN	NW20-PTN
Instantaneous flow-rate · Integrating flow volume flowmeter (with pulse output) NW-P Type		NW10-PTP	NW10-TTP	NW20-NTP	NW20-PTP
Flow-rate range (m3/h)		1.5 – 20L/min	1.0 – 10L/min	3.0 – 60L/min	
Accuracy	Flow-rate indication	+/-2%RS+/-0.2L/min		+/-2% RS+/-0.5L/min	
	Volume indication	+/-2%RS (with the standard installation position)			
Measurable fluids		Various liquids (Please select with reference to the following major materials of the liquid-touching materials)			

Max. Working Pressure		1MPa (at the time of fluid temperature of 20°C)			
Pressure Drop		Not more than 20kPa (At the time of 20L/min)	Not more than 15kPa (At the time of 10L/min)	Not more than 60kPa (At the time of 60L/min)	
Fluid viscosity range		0.5 – 1.5mPa · s			
Fluid temperature range		0 – +60°C			
Ambient temperature range		0 – +60°C 35 – 85%RH(Dew condensation must be avoided)			
Output signal (for NW-P)		<ul style="list-style-type: none"> • Open drain output (Equivalent to open collector) • Pulse width: Not less than 5ms • Max. rating voltage: 30 VDC • Output capacity: “ON resistance” Not more than 150Ω, “OFF resistance” Not less than 100kΩ (Remained voltage not more than 1.5V in case of input current not more than 10mA) 			
Pulse unit (for NW-P)		1L/p			
LCD	Flow-rate	Smallest Scale	0.2L/min	0.5L/min	
		Display digits	000.0L/min		
	Volume	Display digits	0000000.0L		
Power supply		Built-in lithium battery (Battery life 4 years. Not replaceable.)			
Structure		IP64 equivalent, Indoor installation			
Connection		R1/2	R3/4		
Meter Weight		Approx. 250g		Approx. 500g	
Major materials of the liquid touching parts	Casing	PP	ETFE	Denatured PPO	PP
	Vane wheel	POM	ETFE	POM	
	Pivot	SUS304	ETFE	SUS304	
	O-ring	FKM		NBR	FKM
	Magnet	Ba-Fe	Sa-Co ※1	Ba-Fe	

- Any installation position other than the standard installation position is not available for NW05-TTN, NW05-TTP, NW10-TTN, and NW10-TTP.
- ※1: The magnet does not touch liquid.

External dimensions

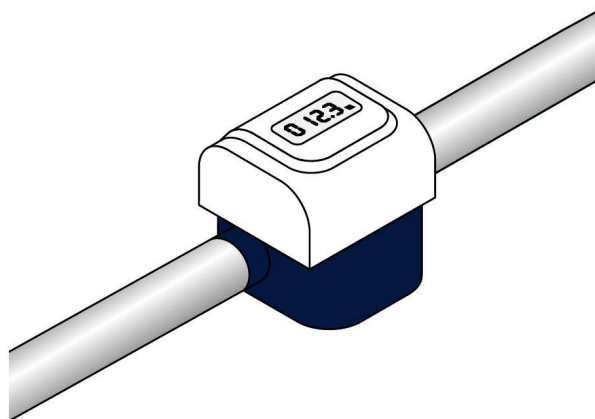
Model	NW05	NW10	NW20
A(mm)	80	80	110
B(mm)	87	87	105.5
C(mm)	52	52	74
D(mm)	11	11	16
E(mm)	25	25	35.5



Standard installation position

The standard installation position is that the display is facing upwards.

※ The display is able to be revolved.



Materials –Abbreviations

Denatured PPO	Denatured Polyphenylene oxide
PP	Polypropylene
ETFE	Ethylene-tetrafluoro ethylene
POM	Polyacetal or Polyoxymethylene
SUS304	Stainless steel 304
PA	Polyamide
NBR	Acrylonitrile-Butadiene Rubber
FKM	Fluoro Rubber
Sa-Co	Samarium-Cobalt
Ba-Fe	Barium-ferrite